

1. Mechanical:

- Capacity: 0-30K PSI, Absolute pressure;
- Proof Pressure: 150% of rated range;
- Burst Pressure: 300% of rated range;
- Pressure Media: Any compatible with alloy Inconel® 718 solution annealed and aged to a minimum hardness of HRC40;
- Pressure port: 3/8-24UNJF-3A, Customizable;
- External case pressure: 30KPSI;
- Wetted Material: NACE-compliant Inconel® 718 Alloy;
- Weight: 35g nominal ;
- Recommended installation torque: (14~17)Nm;

2. Electrical:

- Excitation: 10VDC;
- Bridge resistance: 1.5K Ω to 4K Ω ;
- Output at zero pressure: $\leq \pm 1\text{mV}@5\text{V}$;
- Full scale (F.S.) sensitivity: $(2.6 \pm 0.4)\text{mV/V}$ (Customizable, up to 5.5mV/V);
- Electrical Connections: A= +Excitation, B= +Signal,
C=-Signal, D=-Excitation,
E/F=RTD(Pt1000)

- Electrical Connection: Glass-to-metal sealed solderable pins;
- Insulation resistance: All conductors together to case,
 $\geq 50\text{G}\Omega @ 50\text{V DC}$ and $(25 \pm 5)^\circ\text{C}$;

3. Accuracy:

- Non-Linearity: 0.20%FSO (Best Fit Straight Line Method) ;
- Non-Repeatability: $\pm 0.05\%$ FSO;
- Hysteresis error: 0.05%FSO;
- Long-term stability: $\pm 0.1\%$ FSO per year^[Note2];

4. Environmental

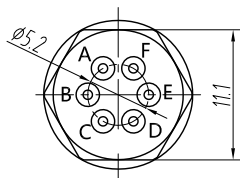
- Working temperature range: -40°C to +240°C;
- Thermo drift of zero: $\pm 0.015\%$ FSO Per °C;
- Thermo drift of sensitivity: $+0.025\%$ FSO Per °C;
- Error due to combined effect of shock, vibration and acceleration shall be less than 0.01% of FSO per g;
- Vibration: 10g(RMS), 10Hz to 200Hz;
- Shock: 500g@1mS, half-sine acceleration.

5. Dynamic

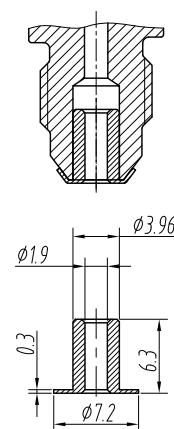
- Response time: 10% to 90%F.S.@1mS;

Note1. The dimension of the O-ring is Ø7.65x11.20x1.78;
UK standard BS 1806-011 (0.301x0.070 inches)
Parker no.: Z-011 FKM-V1238, per US standard AS568.A
Shore A hardness of the O-ring: 95;
The dimension of the back-up ring is 7.9x10.5x0.8,
Material : PEEK (Shore D hardness 90);
All sealing accessories are supplied with the product.

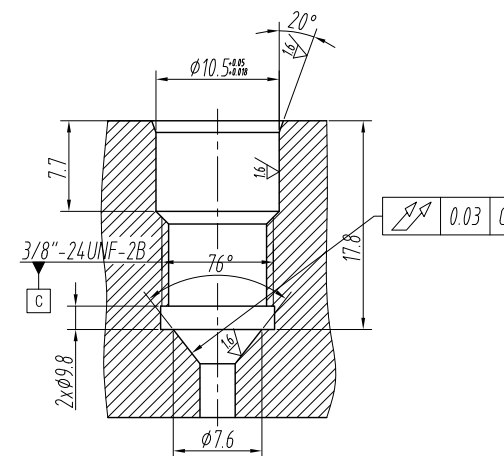
Note2. The long-term stability refers to the drift of the full scale output(FSO) value of the product under the same environmental conditions, otherwise specified.



replaceable seal





Mounting port and sealing method:



Installation information:

Material of the replaceable seal is Inconel 718(annealed);
Recommended installation torque: 14 to 17Nm;
One piece of seal is included with one sensor.

<div>UNLESS OTHERWISE SPECIFIED TOLERANCE UNLESS NOTED: X ± 0.3 .X ± 0.2 .XX ± 0.1 ANGLES: ± 0.5° 3.2/ ▽ FINISH ALL SURFACES DEBURR BREAK ALL SHARP EDGES CONCENTRICITY OF DIA'S WITH COMMON C/L DIMENSIONS ARE IN MM UNLESS OTHERWISE SPECIFIED OTHER STANDARDS MAY APPLY</div>	BY		DATE		<div> Beijing HaiZhuoLiKang Technology Co., Ltd.</div>			
	DRAWN		2024/9/26					
	CHECKED				Absolute Pressure Transducer			
	APPROVED							
	WEIGHT		35g					
FIRST ANGLE PROJECTION 				A4	XX-XXXX	Inconel® 718	INIT. REL.	
				SCALE	DO NOT SCALE	SHEET: 1 OF 1		